

PRACTICE MATERIALS "SO WHAT"

- A. HARDIE

(CONCERT INSTRUMENTS)

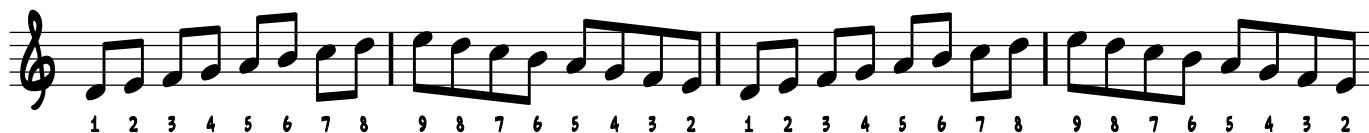
*SCALE/CHORD TONES ARE LABELLED ACCORDING TO THEIR FUNCTION:

2 AND 9 ARE THE SAME NOTE - 4 AND 11 ARE THE SAME NOTE - 6 AND 13 ARE THE SAME NOTE
THE HIGHER NUMBERS ARE USUALLY USED WHEN THE NOTES ARE USED IN ARPEGGIOS (CHORD TONES)

1 AND 8 ARE THE SAME NOTE- 8 IS USED WHEN PLAYING THROUGH A SCALE INTO THE HIGHER OCTAVE

SCALES: D^M

EXERCISE 1:



E^bM^I



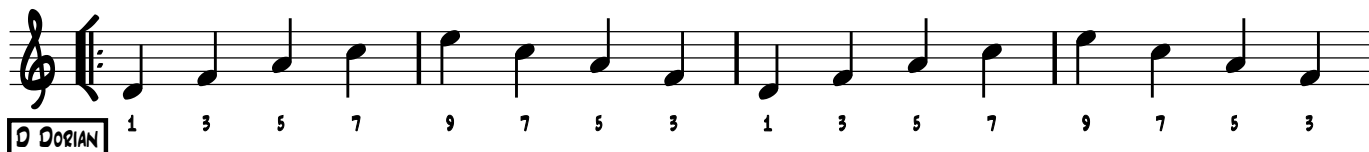
E^b DORIAN



ARPEGGIOS:

D^M

EXERCISE 2:



D^M



E^bM^I



E^b DORIAN

E^bM^I



PRACTICE MATERIALS "SO WHAT"

- A. HARDIE

(CONCERT INSTRUMENTS)

EXERCISE 3:

ARPEGGIOS: D^M

D^M

D^M

D DORIAN

D^M

D^M

E^bMⁱ

E^bMⁱ

E^b DORIAN

E^bMⁱ

E^bMⁱ

ARPEGGIOS AND SCALES:

EXERCISE 4:

D^M

D^M

D DORIAN

11 9 7 5 3 4 5 6 7 8 9 3

E^bMⁱ

E^bMⁱ

E^b DORIAN

11 9 7 5 3 4 5 6 7 8 9 3

PRACTICE MATERIALS FOR "SO WHAT"

WRITTEN SOLO EXERCISE 1:

- A. HARDIE

(CONCERT INSTRUMENTS)

WRITE A 2 MEASURE RESPONSE PHRASE TO EACH OF THE "CALL" PHRASES.
NUMBER THE SCALE DEGREES THAT YOU USE.

CALL: D^{MI} RESPONSE: D^{MI}

D DORIAN

CALL: D^{MI} RESPONSE: D^{MI}

E^b DORIAN

CALL: E^b D^{MI} RESPONSE: E^b D^{MI}

E^b DORIAN

CALL: E^b D^{MI} RESPONSE: E^b D^{MI}

WRITTEN SOLO EXERCISE 2:

WRITE A 16 BAR SOLO OVER THE GIVEN CHORDS.
NUMBER THE SCALE DEGREES THAT YOU USE.

D^{MI}

D DORIAN

E^b D^{MI}

E^b DORIAN