

# PRACTICE MATERIALS "SO WHAT"

- A. HARDIE

(B<sup>b</sup> INSTRUMENTS)

\*SCALE/CHORD TONES ARE LABELLED ACCORDING TO THEIR FUNCTION:

2 AND 9 ARE THE SAME NOTE - 4 AND 11 ARE THE SAME NOTE - 6 AND 13 ARE THE SAME NOTE  
THE HIGHER NUMBERS ARE USUALLY USED WHEN THE NOTES ARE USED IN ARPEGGIOS (CHORD TONES)  
1 AND 8 ARE THE SAME NOTE- 8 IS USED WHEN PLAYING THROUGH A SCALE INTO THE HIGHER OCTAVE

SCALES: E<sup>M</sup>

## EXERCISE 1:

1 2 3 4 5 6 7 8 9 8 7 6 5 4 3 2

E DORIAN

1 2 3 4 5 6 7 8 9 8 7 6 5 4 3 2 1 2 3 4 5 6 7 8 9 8 7 6 5 4 3 2

F<sup>M</sup>

1 2 3 4 5 6 7 8 9 8 7 6 5 4 3 2

F DORIAN

1 2 3 4 5 6 7 8 9 8 7 6 5 4 3 2 1 2 3 4 5 6 7 8 9 8 7 6 5 4 3 2

ARPEGGIOS:

E<sup>M</sup>

## EXERCISE 2:

1 3 5 7 9 7 5 3 1 3 5 7 9 7 5 3

E DORIAN

E<sup>M</sup>

3 5 7 9 11 9 7 5 3 5 7 9 11 9 7 5

F<sup>M</sup>

1 3 5 7 9 7 5 3 1 3 5 7 9 7 5 3

F DORIAN

F<sup>M</sup>

3 5 7 9 11 9 7 5 3 5 7 9 11 9 7 5

# PRACTICE MATERIALS "SO WHAT"

- A. HARDIE

(B<sup>b</sup> INSTRUMENTS)

## EXERCISE 3:

ARPEGGIOS: EMI

EMI

E DORIAN 1 3 5 7 9 11 13 11 9 7 5 3 1

EMI

5 3 1 7 5 3 1 3 5 7 9 7 5 3 1

FMI

F DORIAN 1 3 5 7 9 11 13 11 9 7 5 3 1

F DORIAN

FMI

5 3 1 7 5 3 1 3 5 7 9 7 5 3 1

ARPEGGIOS AND SCALES:

## EXERCISE 4:

EMI

E DORIAN 1 3 5 7 9 8 7 6 5 4 3 2

11 9 7 5 3 4 5 6 7 8 9 3

FMI

F DORIAN 1 3 5 7 9 8 7 6 5 4 3 2

F DORIAN

11 9 7 5 3 4 5 6 7 8 9 3

# PRACTICE MATERIALS FOR "SO WHAT"

## WRITTEN SOLO EXERCISE 1:

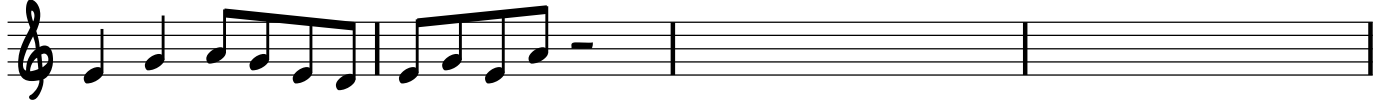
- A. HARDIE

(B<sup>b</sup> INSTRUMENTS)

WRITE A 2 MEASURE RESPONSE PHRASE TO EACH OF THE "CALL" PHRASES.  
NUMBER THE SCALE DEGREES THAT YOU USE.

CALL:  
E M I

RESPONSE:  
E M I



E DORIAN

1 3 4 3 1 7 1 3 1 4

CALL:  
E M I

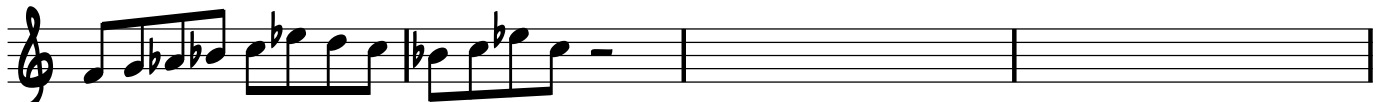
RESPONSE:  
E M I



5 4 3 1 3 5 7 6 7 8 5 4 3

CALL:  
F M I

RESPONSE:  
F M I

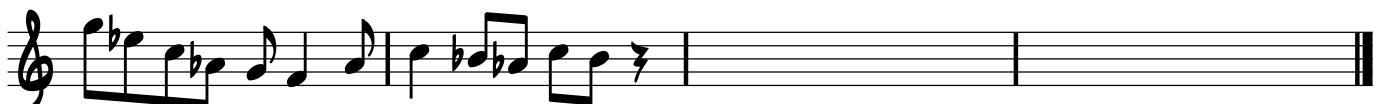


1 2 3 4 5 7 6 5 4 5 7 5

F DORIAN

CALL:  
F M I

RESPONSE:  
F M I

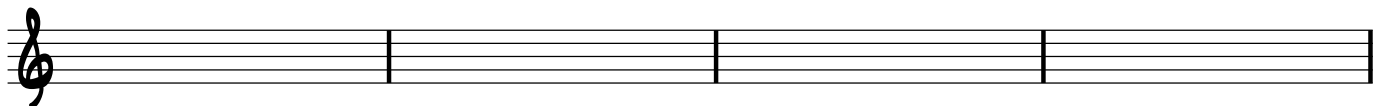


9 7 5 3 2 1 2 5 4 3 5 4

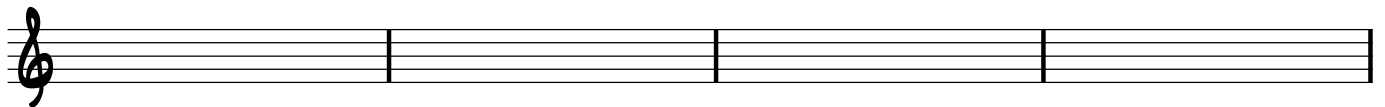
## WRITTEN SOLO EXERCISE 2:

WRITE A 16 BAR SOLO OVER THE GIVEN CHORDS.  
NUMBER THE SCALE DEGREES THAT YOU USE.

E M I



E DORIAN



F M I



F DORIAN

