

C

Learning the Major Scales - Bb Concert

1. Play all the notes

Musical notation for playing all the notes of the Bb major scale. It consists of four staves of music in 4/4 time, starting with a treble clef and a key signature of two flats (Bb). The first staff shows the ascending scale: C4, D4, Eb4, F4, G4, Ab4, Bb4, C5. The second staff shows the descending scale: C5, Bb4, Ab4, G4, F4, Eb4, D4, C4. The third and fourth staves show the scale broken into groups of four notes, ascending and descending respectively.

2. The Bottom 4 Notes

Play 5 times

Musical notation for the bottom 4 notes of the Bb major scale: C4, D4, Eb4, F4. The notes are played in pairs (C4-D4, Eb4-F4) and then together as a dyad (C4-Eb4, D4-F4). The key signature is Bb and the time signature is 4/4.

3. The Top 4 Notes

Play 5 times

Musical notation for the top 4 notes of the Bb major scale: G4, Ab4, Bb4, C5. The notes are played in pairs (G4-Ab4, Bb4-C5) and then together as a dyad (G4-Bb4, Ab4-C5). The key signature is Bb and the time signature is 4/4.

4. Put The Scale Together

Play 5 times

Musical notation for putting the scale together. It shows the ascending scale (C4, D4, Eb4, F4, G4, Ab4, Bb4, C5) followed by the descending scale (C5, Bb4, Ab4, G4, F4, Eb4, D4, C4). The key signature is Bb and the time signature is 4/4.

5. The First Arpeggio

Play 5 times

Musical notation for the first arpeggio of the Bb major scale: C4, Eb4, G4, Bb4. The notes are played in pairs (C4-Eb4, G4-Bb4) and then together as a dyad (C4-G4, Eb4-Bb4). The key signature is Bb and the time signature is 4/4.

6. Put The Arpeggios Together

Play 5 times

Musical notation for putting the arpeggios together. It shows the first arpeggio (C4, Eb4, G4, Bb4) followed by the second arpeggio (G4, Ab4, Bb4, C5). The key signature is Bb and the time signature is 4/4.

7. Ascending 3rds- The Bottom Half

Play 5 times



8. Ascending 3rds- The Top Half

Play 5 times



9. Put Together The Ascending 3rds

Play 5 times



10. Descending 3rds- The Top Half

Play 5 times



11. Descending 3rds- The Bottom Half

Play 5 times



12. Put Together The Descending 3rds

Play 5 times



13. The Complete Scale, Arpeggio, and Scale in 3rds



C

Learning the Major Scales - B Concert

1. Play all the notes

Musical notation for playing all the notes of the B major scale. The notation consists of four staves, each containing a sequence of notes in 4/4 time. The key signature is B major (two sharps: F# and C#). The notes are: B2, C3, D3, E3, F#3, G3, A3, B3, C4, D4, E4, F#4, G4, A4, B4, C5, D5, E5, F#5, G5, A5, B5, C6, D6, E6, F#6, G6, A6, B6, C7, D7, E7, F#7, G7, A7, B7, C8, D8, E8, F#8, G8, A8, B8, C9, D9, E9, F#9, G9, A9, B9, C10, D10, E10, F#10, G10, A10, B10, C11, D11, E11, F#11, G11, A11, B11, C12, D12, E12, F#12, G12, A12, B12, C13, D13, E13, F#13, G13, A13, B13, C14, D14, E14, F#14, G14, A14, B14, C15, D15, E15, F#15, G15, A15, B15, C16, D16, E16, F#16, G16, A16, B16, C17, D17, E17, F#17, G17, A17, B17, C18, D18, E18, F#18, G18, A18, B18, C19, D19, E19, F#19, G19, A19, B19, C20, D20, E20, F#20, G20, A20, B20, C21, D21, E21, F#21, G21, A21, B21, C22, D22, E22, F#22, G22, A22, B22, C23, D23, E23, F#23, G23, A23, B23, C24, D24, E24, F#24, G24, A24, B24, C25, D25, E25, F#25, G25, A25, B25, C26, D26, E26, F#26, G26, A26, B26, C27, D27, E27, F#27, G27, A27, B27, C28, D28, E28, F#28, G28, A28, B28, C29, D29, E29, F#29, G29, A29, B29, C30, D30, E30, F#30, G30, A30, B30, C31, D31, E31, F#31, G31, A31, B31, C32, D32, E32, F#32, G32, A32, B32, C33, D33, E33, F#33, G33, A33, B33, C34, D34, E34, F#34, G34, A34, B34, C35, D35, E35, F#35, G35, A35, B35, C36, D36, E36, F#36, G36, A36, B36, C37, D37, E37, F#37, G37, A37, B37, C38, D38, E38, F#38, G38, A38, B38, C39, D39, E39, F#39, G39, A39, B39, C40, D40, E40, F#40, G40, A40, B40, C41, D41, E41, F#41, G41, A41, B41, C42, D42, E42, F#42, G42, A42, B42, C43, D43, E43, F#43, G43, A43, B43, C44, D44, E44, F#44, G44, A44, B44, C45, D45, E45, F#45, G45, A45, B45, C46, D46, E46, F#46, G46, A46, B46, C47, D47, E47, F#47, G47, A47, B47, C48, D48, E48, F#48, G48, A48, B48, C49, D49, E49, F#49, G49, A49, B49, C50, D50, E50, F#50, G50, A50, B50, C51, D51, E51, F#51, G51, A51, B51, C52, D52, E52, F#52, G52, A52, B52, C53, D53, E53, F#53, G53, A53, B53, C54, D54, E54, F#54, G54, A54, B54, C55, D55, E55, F#55, G55, A55, B55, C56, D56, E56, F#56, G56, A56, B56, C57, D57, E57, F#57, G57, A57, B57, C58, D58, E58, F#58, G58, A58, B58, C59, D59, E59, F#59, G59, A59, B59, C60, D60, E60, F#60, G60, A60, B60, C61, D61, E61, F#61, G61, A61, B61, C62, D62, E62, F#62, G62, A62, B62, C63, D63, E63, F#63, G63, A63, B63, C64, D64, E64, F#64, G64, A64, B64, C65, D65, E65, F#65, G65, A65, B65, C66, D66, E66, F#66, G66, A66, B66, C67, D67, E67, F#67, G67, A67, B67, C68, D68, E68, F#68, G68, A68, B68, C69, D69, E69, F#69, G69, A69, B69, C70, D70, E70, F#70, G70, A70, B70, C71, D71, E71, F#71, G71, A71, B71, C72, D72, E72, F#72, G72, A72, B72, C73, D73, E73, F#73, G73, A73, B73, C74, D74, E74, F#74, G74, A74, B74, C75, D75, E75, F#75, G75, A75, B75, C76, D76, E76, F#76, G76, A76, B76, C77, D77, E77, F#77, G77, A77, B77, C78, D78, E78, F#78, G78, A78, B78, C79, D79, E79, F#79, G79, A79, B79, C80, D80, E80, F#80, G80, A80, B80, C81, D81, E81, F#81, G81, A81, B81, C82, D82, E82, F#82, G82, A82, B82, C83, D83, E83, F#83, G83, A83, B83, C84, D84, E84, F#84, G84, A84, B84, C85, D85, E85, F#85, G85, A85, B85, C86, D86, E86, F#86, G86, A86, B86, C87, D87, E87, F#87, G87, A87, B87, C88, D88, E88, F#88, G88, A88, B88, C89, D89, E89, F#89, G89, A89, B89, C90, D90, E90, F#90, G90, A90, B90, C91, D91, E91, F#91, G91, A91, B91, C92, D92, E92, F#92, G92, A92, B92, C93, D93, E93, F#93, G93, A93, B93, C94, D94, E94, F#94, G94, A94, B94, C95, D95, E95, F#95, G95, A95, B95, C96, D96, E96, F#96, G96, A96, B96, C97, D97, E97, F#97, G97, A97, B97, C98, D98, E98, F#98, G98, A98, B98, C99, D99, E99, F#99, G99, A99, B99, C100, D100, E100, F#100, G100, A100, B100, C101, D101, E101, F#101, G101, A101, B101, C102, D102, E102, F#102, G102, A102, B102, C103, D103, E103, F#103, G103, A103, B103, C104, D104, E104, F#104, G104, A104, B104, C105, D105, E105, F#105, G105, A105, B105, C106, D106, E106, F#106, G106, A106, B106, C107, D107, E107, F#107, G107, A107, B107, C108, D108, E108, F#108, G108, A108, B108, C109, D109, E109, F#109, G109, A109, B109, C110, D110, E110, F#110, G110, A110, B110, C111, D111, E111, F#111, G111, A111, B111, C112, D112, E112, F#112, G112, A112, B112, C113, D113, E113, F#113, G113, A113, B113, C114, D114, E114, F#114, G114, A114, B114, C115, D115, E115, F#115, G115, A115, B115, C116, D116, E116, F#116, G116, A116, B116, C117, D117, E117, F#117, G117, A117, B117, C118, D118, E118, F#118, G118, A118, B118, C119, D119, E119, F#119, G119, A119, B119, C120, D120, E120, F#120, G120, A120, B120, C121, D121, E121, F#121, G121, A121, B121, C122, D122, E122, F#122, G122, A122, B122, C123, D123, E123, F#123, G123, A123, B123, C124, D124, E124, F#124, G124, A124, B124, C125, D125, E125, F#125, G125, A125, B125, C126, D126, E126, F#126, G126, A126, B126, C127, D127, E127, F#127, G127, A127, B127, C128, D128, E128, F#128, G128, A128, B128, C129, D129, E129, F#129, G129, A129, B129, C130, D130, E130, F#130, G130, A130, B130, C131, D131, E131, F#131, G131, A131, B131, C132, D132, E132, F#132, G132, A132, B132, C133, D133, E133, F#133, G133, A133, B133, C134, D134, E134, F#134, G134, A134, B134, C135, D135, E135, F#135, G135, A135, B135, C136, D136, E136, F#136, G136, A136, B136, C137, D137, E137, F#137, G137, A137, B137, C138, D138, E138, F#138, G138, A138, B138, C139, D139, E139, F#139, G139, A139, B139, C140, D140, E140, F#140, G140, A140, B140, C141, D141, E141, F#141, G141, A141, B141, C142, D142, E142, F#142, G142, A142, B142, C143, D143, E143, F#143, G143, A143, B143, C144, D144, E144, F#144, G144, A144, B144, C145, D145, E145, F#145, G145, A145, B145, C146, D146, E146, F#146, G146, A146, B146, C147, D147, E147, F#147, G147, A147, B147, C148, D148, E148, F#148, G148, A148, B148, C149, D149, E149, F#149, G149, A149, B149, C150, D150, E150, F#150, G150, A150, B150, C151, D151, E151, F#151, G151, A151, B151, C152, D152, E152, F#152, G152, A152, B152, C153, D153, E153, F#153, G153, A153, B153, C154, D154, E154, F#154, G154, A154, B154, C155, D155, E155, F#155, G155, A155, B155, C156, D156, E156, F#156, G156, A156, B156, C157, D157, E157, F#157, G157, A157, B157, C158, D158, E158, F#158, G158, A158, B158, C159, D159, E159, F#159, G159, A159, B159, C160, D160, E160, F#160, G160, A160, B160, C161, D161, E161, F#161, G161, A161, B161, C162, D162, E162, F#162, G162, A162, B162, C163, D163, E163, F#163, G163, A163, B163, C164, D164, E164, F#164, G164, A164, B164, C165, D165, E165, F#165, G165, A165, B165, C166, D166, E166, F#166, G166, A166, B166, C167, D167, E167, F#167, G167, A167, B167, C168, D168, E168, F#168, G168, A168, B168, C169, D169, E169, F#169, G169, A169, B169, C170, D170, E170, F#170, G170, A170, B170, C171, D171, E171, F#171, G171, A171, B171, C172, D172, E172, F#172, G172, A172, B172, C173, D173, E173, F#173, G173, A173, B173, C174, D174, E174, F#174, G174, A174, B174, C175, D175, E175, F#175, G175, A175, B175, C176, D176, E176, F#176, G176, A176, B176, C177, D177, E177, F#177, G177, A177, B177, C178, D178, E178, F#178, G178, A178, B178, C179, D179, E179, F#179, G179, A179, B179, C180, D180, E180, F#180, G180, A180, B180, C181, D181, E181, F#181, G181, A181, B181, C182, D182, E182, F#182, G182, A182, B182, C183, D183, E183, F#183, G183, A183, B183, C184, D184, E184, F#184, G184, A184, B184, C185, D185, E185, F#185, G185, A185, B185, C186, D186, E186, F#186, G186, A186, B186, C187, D187, E187, F#187, G187, A187, B187, C188, D188, E188, F#188, G188, A188, B188, C189, D189, E189, F#189, G189, A189, B189, C190, D190, E190, F#190, G190, A190, B190, C191, D191, E191, F#191, G191, A191, B191, C192, D192, E192, F#192, G192, A192, B192, C193, D193, E193, F#193, G193, A193, B193, C194, D194, E194, F#194, G194, A194, B194, C195, D195, E195, F#195, G195, A195, B195, C196, D196, E196, F#196, G196, A196, B196, C197, D197, E197, F#197, G197, A197, B197, C198, D198, E198, F#198, G198, A198, B198, C199, D199, E199, F#199, G199, A199, B199, C200, D200, E200, F#200, G200, A200, B200, C201, D201, E201, F#201, G201, A201, B201, C202, D202, E202, F#202, G202, A202, B202, C203, D203, E203, F#203, G203, A203, B203, C204, D204, E204, F#204, G204, A204, B204, C205, D205, E205, F#205, G205, A205, B205, C206, D206, E206, F#206, G206, A206, B206, C207, D207, E207, F#207, G207, A207, B207, C208, D208, E208, F#208, G208, A208, B208, C209, D209, E209, F#209, G209, A209, B209, C210, D210, E210, F#210, G210, A210, B210, C211, D211, E211, F#211, G211, A211, B211, C212, D212, E212, F#212, G212, A212, B212, C213, D213, E213, F#213, G213, A213, B213, C214, D214, E214, F#214, G214, A214, B214, C215, D215, E215, F#215, G215, A215, B215, C216, D216, E216, F#216, G216, A216, B216, C217, D217, E217, F#217, G217, A217, B217, C218, D218, E218, F#218, G218, A218, B218, C219, D219, E219, F#219, G219, A219, B219, C220, D220, E220, F#220, G220, A220, B220, C221, D221, E221, F#221, G221, A221, B221, C222, D222, E222, F#222, G222, A222, B222, C223, D223, E223, F#223, G223, A223, B223, C224, D224, E224, F#224, G224, A224, B224, C225, D225, E225, F#225, G225, A225, B225, C226, D226, E226, F#226, G226, A226, B226, C227, D227, E227, F#227, G227, A227, B227, C228, D228, E228, F#228, G228, A228, B228, C229, D229, E229, F#229, G229, A229, B229, C230, D230, E230, F#230, G230, A230, B230, C231, D231, E231, F#231, G231, A231, B231, C232, D232, E232, F#232, G232, A232, B232, C233, D233, E233, F#233, G233, A233, B233, C234, D234, E234, F#234, G234, A234, B234, C235, D235, E235, F#235, G235, A235, B235, C236, D236, E236, F#236, G236, A236, B236, C237, D237, E237, F#237, G237, A237, B237, C238, D238, E238, F#238, G238, A238, B238, C239, D239, E239, F#239, G239, A239, B239, C240, D240, E240, F#240, G240, A240, B240, C241, D241, E241, F#241, G241, A241, B241, C242, D242, E242, F#242, G242, A242, B242, C243, D243, E243, F#243, G243, A243, B243, C244, D244, E244, F#244, G244, A244, B244, C245, D245, E245, F#245, G245, A245, B245, C246, D246, E246, F#246, G246, A246, B246, C247, D247, E247, F#247, G247, A247, B247, C248, D248, E248, F#248, G248, A248, B248, C249, D249, E249, F#249, G249, A249, B249, C250, D250, E250, F#250, G250, A250, B250, C251, D251, E251, F#251, G251, A251, B251, C252, D252, E252, F#252, G252, A252, B252, C253, D253, E253, F#253, G253, A253, B253, C254, D254, E254, F#254, G254, A254, B254, C255, D255, E255, F#255, G255, A255, B255, C256, D256, E256, F#256, G256, A256, B256, C257, D257, E257, F#257, G257, A257, B257, C258, D258, E258, F#258, G258, A258, B258, C259, D259, E259, F#259, G259, A259, B259, C260, D260, E260, F#260, G260, A260, B260, C261, D261, E261, F#261, G261, A261, B261, C262, D262, E262, F#262, G262, A262, B262, C263, D263, E263, F#263, G263, A263, B263, C264, D264, E264, F#264, G264, A264, B264, C265, D265, E265, F#265, G265, A265, B265, C266, D266, E266, F#266, G266, A266, B266, C267, D267, E267, F#267, G267, A267, B267, C268, D268, E268, F#268, G268, A268, B268, C269, D269, E269, F#269, G269, A269, B269, C270, D270, E270, F#270, G270, A270, B270, C271, D271, E271, F#271, G271, A271, B271, C272, D272, E272, F#272, G272, A272, B272, C273, D273, E273, F#273, G273, A273, B273, C274, D274, E274, F#274, G274, A274, B274, C275, D275, E275, F#275, G275, A275, B275, C276, D276, E276, F#276, G276, A276, B276, C277, D277, E277, F#277, G277, A277, B277, C278, D278, E278, F#278, G278, A278, B278, C279, D279, E279, F#279, G279, A279, B279, C280, D280, E280, F#280, G280, A280, B280, C281, D281, E281, F#281, G281, A281, B281, C282, D282, E282, F#282, G282, A282, B282, C283, D283, E283, F#283, G283, A283, B283, C284, D284, E284, F#284, G284, A284, B284, C285, D285, E285, F#285, G285, A285, B285, C286, D286, E286, F#286, G286, A286, B286, C287, D287, E287, F#287, G287, A287, B287, C288, D288, E288, F#288, G288, A288, B288, C289, D289, E289, F#289, G289, A289, B289, C290, D290, E290, F#290, G290, A290, B290, C291, D291, E291, F#291, G291, A291, B291, C292, D292, E292, F#292, G292, A292, B292, C293, D293, E293, F#293, G293, A293, B293, C294, D294, E294, F#294, G294, A294, B294, C295, D295, E295, F#295, G295, A295, B295, C296, D296, E296, F#296, G296, A296, B296, C297, D297, E297, F#297, G297, A297, B297, C298, D298, E298, F#298, G298, A298, B298, C299, D299, E299, F#299, G299, A299, B299, C300, D300, E300, F#300, G300, A300, B300, C301, D301, E301, F#301, G301, A301, B301, C302, D302, E302, F#302, G302, A302, B302, C303, D303, E303, F#303, G303, A303, B303, C304, D304, E304, F#304, G304, A304, B304, C305, D305, E305, F#305, G305, A305, B305, C306, D306, E306, F#306, G306, A306, B306, C307, D307, E307, F#307, G307, A307, B307, C308, D308, E308, F#308, G308, A308, B308, C309, D309, E309, F#309, G309, A309, B309, C310, D310, E310, F#310, G310, A310, B310, C311, D311, E311, F#311, G311, A311, B311, C312, D312, E312, F#312, G312, A312, B312, C313, D313, E313, F#313, G313, A313, B313, C314, D314, E314, F#314, G314, A314, B314, C315, D315, E315, F#315, G315, A315, B315, C316, D316, E316, F#316, G316, A316, B316, C317, D317, E317, F#317, G317, A317, B317, C318, D318, E318, F#318, G318, A318, B318, C319, D319, E319, F#319, G319, A319, B319, C320, D320, E320, F#320, G320, A320, B320, C321, D321, E321, F#321, G321, A321, B321, C322, D322, E322, F#322, G322, A322, B322, C323, D323, E323, F#323, G323, A323, B323, C324, D324, E324, F#324, G324, A324, B324, C325, D325, E325, F#325, G325, A325, B325, C326, D326, E326, F#326, G326, A326, B326, C327, D327, E327, F#327, G327, A327, B327, C328, D328, E328, F#328, G328, A328, B328, C329, D329, E329, F#329, G329, A329, B329, C330, D330, E330, F#330, G330, A330, B330, C331, D331, E331, F#331, G331, A331, B331, C332, D332, E332, F#332, G332, A332, B332, C333, D333, E333, F#333, G333, A333, B333, C334, D334, E334, F#334, G334, A334, B334, C335, D335, E335, F#335, G335, A335, B335, C336, D336, E336, F#336, G336, A336, B336, C337, D337, E337, F#337, G337, A337, B337, C338, D338, E338, F#338, G338, A338, B338, C339, D339, E339, F#339, G339, A339, B339, C340, D340, E340, F#340, G340, A340, B340, C341, D341, E341, F#341, G341, A341, B341, C342, D342, E342, F#342, G342, A342, B342, C343, D343, E343, F#343, G343, A343, B343, C344, D344, E344, F#344, G344, A344, B344, C345, D345, E345, F#345, G345, A345, B345, C346, D346, E346, F#346, G346, A346, B346, C347, D347, E347, F#347, G347, A347, B347, C348, D348, E348, F#348, G348, A348, B348, C349, D349, E349, F#349, G349, A349, B349, C350, D350, E350, F#350, G350, A350, B350, C351, D351, E351, F#351, G351, A351, B351, C352, D352, E352, F#352, G352, A352, B352, C353, D353, E353, F#353, G353, A353, B353, C354, D354, E354, F#354, G354, A354, B354, C355, D355, E355, F#355, G355, A355, B355, C356, D356, E356, F#356, G356, A356, B356, C357, D357, E357, F#357, G357, A357, B357, C358, D358, E358, F#358, G358, A358, B358, C359, D359, E359, F#359, G359, A359, B359, C360, D360, E360, F#360, G360, A360, B360, C361

7. Ascending 3rds- The Bottom Half

Play 5 times



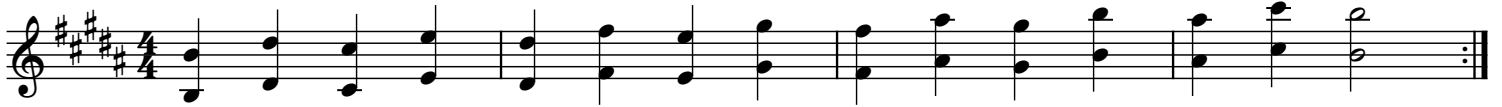
8. Ascending 3rds- The Top Half

Play 5 times



9. Put Together The Ascending 3rds

Play 5 times



10. Descending 3rds- The Top Half

Play 5 times



11. Descending 3rds- The Bottom Half

Play 5 times



12. Put Together The Descending 3rds

Play 5 times



13. The Complete Scale, Arpeggio, and Scale in 3rds



C

Learning the Major Scales - C Concert

1. Play all the notes

Musical notation for playing all the notes of the C major scale. It consists of four staves of music in 4/4 time. The first staff shows the ascending scale: C4 (quarter), C4-E4 (quarter), E4-G4 (quarter), G4-A4 (quarter), A4-B4 (quarter), B4-C5 (quarter), C5 (half). The second staff shows the descending scale: C5 (half), B4-A4 (quarter), A4-G4 (quarter), G4-F4 (quarter), F4-E4 (quarter), E4-D4 (quarter), D4-C4 (quarter). The third and fourth staves show the scale broken into groups of four notes, ascending and then descending, with a whole note rest at the end of each group.

2. The Bottom 4 Notes

Play 5 times

Musical notation for the bottom 4 notes of the C major scale: C4 (quarter), C4-E4 (quarter), E4-G4 (quarter), G4-A4 (quarter), A4-B4 (quarter), B4-C5 (quarter), C5 (half). The notation includes a repeat sign at the end.

3. The Top 4 Notes

Play 5 times

Musical notation for the top 4 notes of the C major scale: C5 (half), B4-A4 (quarter), A4-G4 (quarter), G4-F4 (quarter), F4-E4 (quarter), E4-D4 (quarter), D4-C4 (quarter). The notation includes a repeat sign at the end.

4. Put The Scale Together

Play 5 times

Musical notation for putting the scale together. It consists of a single staff in 4/4 time showing the full C major scale: C4 (quarter), C4-E4 (quarter), E4-G4 (quarter), G4-A4 (quarter), A4-B4 (quarter), B4-C5 (quarter), C5 (half), B4-A4 (quarter), A4-G4 (quarter), G4-F4 (quarter), F4-E4 (quarter), E4-D4 (quarter), D4-C4 (quarter). The notation includes a repeat sign at the end.

5. The First Arpeggio

Play 5 times

Musical notation for the first arpeggio: C4 (quarter), C4-E4 (quarter), E4-G4 (quarter), G4-A4 (quarter), A4-B4 (quarter), B4-C5 (quarter), C5 (half). The notation includes a repeat sign at the end.

6. Put The Arpeggios Together

Play 5 times

Musical notation for putting the arpeggios together. It consists of a single staff in 4/4 time showing the first arpeggio followed by the second arpeggio: C4 (quarter), C4-E4 (quarter), E4-G4 (quarter), G4-A4 (quarter), A4-B4 (quarter), B4-C5 (quarter), C5 (half), B4-A4 (quarter), A4-G4 (quarter), G4-F4 (quarter), F4-E4 (quarter), E4-D4 (quarter), D4-C4 (quarter). The notation includes a repeat sign at the end.

7. Ascending 3rds- The Bottom Half



8. Ascending 3rds- The Top Half



9. Put Together The Ascending 3rds



10. Descending 3rds- The Top Half



11. Descending 3rds- The Bottom Half



12. Put Together The Descending 3rds



13. The Complete Scale, Arpeggio, and Scale in 3rds



C

Learning the Major Scales - Db Concert

1. Play all the notes

Musical notation for playing all the notes of the Db major scale. It consists of four staves of music in 4/4 time, with a key signature of three flats (Bb, Eb, Ab). The first staff shows the ascending scale: D4 (quarter), Eb4 (quarter), Ab4 (quarter), Bb4 (quarter), C5 (half). The second staff shows the descending scale: Bb4 (quarter), Ab4 (quarter), Eb4 (quarter), D4 (quarter), C5 (half). The third and fourth staves show the scale played in pairs of eighth notes, ascending and then descending.

2. The Bottom 4 Notes

Play 5 times

Musical notation for the bottom 4 notes of the Db major scale: D4 (quarter), Eb4 (quarter), Ab4 (quarter), Bb4 (quarter), C5 (half). The piece ends with a double bar line and repeat dots.

3. The Top 4 Notes

Play 5 times

Musical notation for the top 4 notes of the Db major scale: Bb4 (quarter), Ab4 (quarter), Eb4 (quarter), D4 (quarter), C5 (half). The piece ends with a double bar line and repeat dots.

4. Put The Scale Together

Play 5 times

Musical notation for putting the scale together. It shows the ascending and descending scales in 4/4 time, with a key signature of three flats. The piece ends with a double bar line and repeat dots.

5. The First Arpeggio

Play 5 times

Musical notation for the first arpeggio of the Db major scale: D4 (quarter), Eb4 (quarter), Ab4 (quarter), Bb4 (quarter), C5 (half). The piece ends with a double bar line and repeat dots.

6. Put The Arpeggios Together

Play 5 times

Musical notation for putting the arpeggios together. It shows the ascending and descending arpeggios in 4/4 time, with a key signature of three flats. The piece ends with a double bar line and repeat dots.

C

Learning the Major Scales - D Concert

1. Play all the notes

Musical notation for playing all the notes of the D major scale. It consists of four staves of music in 4/4 time, with a key signature of two sharps (F# and C#). The first staff shows the ascending scale: D4 (quarter), E4 (quarter), F#4 (quarter), G4 (quarter), A4 (quarter), B4 (quarter), C#5 (quarter), D5 (half). The second staff shows the descending scale: D5 (quarter), C#5 (quarter), B4 (quarter), A4 (quarter), G4 (quarter), F#4 (quarter), E4 (quarter), D4 (half). The third and fourth staves show the scale played in pairs of eighth notes, ascending and then descending.

2. The Bottom 4 Notes

Play 5 times

Musical notation for the bottom 4 notes of the D major scale: D4, E4, F#4, G4. The notes are played in pairs of eighth notes, ascending and then descending, with a repeat sign at the end.

3. The Top 4 Notes

Play 5 times

Musical notation for the top 4 notes of the D major scale: A4, B4, C#5, D5. The notes are played in pairs of eighth notes, ascending and then descending, with a repeat sign at the end.

4. Put The Scale Together

Play 5 times

Musical notation for putting the scale together. It shows the full D major scale (D4 to D5) played in pairs of eighth notes, ascending and then descending, with a repeat sign at the end.

5. The First Arpeggio

Play 5 times

Musical notation for the first arpeggio of the D major scale: D4 (quarter), E4 (quarter), F#4 (quarter), G4 (quarter), D5 (half). The notes are played in pairs of eighth notes, ascending and then descending, with a repeat sign at the end.

6. Put The Arpeggios Together

Play 5 times

Musical notation for putting the arpeggios together. It shows the first arpeggio (D4, E4, F#4, G4, D5) followed by the second arpeggio (A4, B4, C#5, D5, D4), with a repeat sign at the end.

7. Ascending 3rds- The Bottom Half

Play 5 times



8. Ascending 3rds- The Top Half

Play 5 times



9. Put Together The Ascending 3rds

Play 5 times



10. Descending 3rds- The Top Half

Play 5 times



11. Descending 3rds- The Bottom Half

Play 5 times



12. Put Together The Descending 3rds

Play 5 times



13. The Complete Scale, Arpeggio, and Scale in 3rds



C

Learning the Major Scales - Eb Concert

1. Play all the notes

Musical notation for playing all the notes of the Eb major scale. It consists of four staves of music in 4/4 time, with a key signature of two flats (Bb and Eb). The first staff shows the ascending scale: Eb, F, G, Ab, Bb, C, D, Eb. The second staff shows the descending scale: Eb, D, C, Bb, Ab, G, F, Eb. The third and fourth staves show the scale in a more complex, arpeggiated pattern, alternating between ascending and descending lines.

2. The Bottom 4 Notes

Play 5 times

Musical notation for the bottom 4 notes of the Eb major scale: Eb, F, G, Ab. The notes are written on a single staff in 4/4 time, with a key signature of two flats. The notes are beamed together and repeated five times.

3. The Top 4 Notes

Play 5 times

Musical notation for the top 4 notes of the Eb major scale: Bb, C, D, Eb. The notes are written on a single staff in 4/4 time, with a key signature of two flats. The notes are beamed together and repeated five times.

4. Put The Scale Together

Play 5 times

Musical notation for putting the scale together. It consists of a single staff of music in 4/4 time, with a key signature of two flats. The notes are written in a sequence that combines the bottom 4 notes (Eb, F, G, Ab) and the top 4 notes (Bb, C, D, Eb), repeated five times.

5. The First Arpeggio

Play 5 times

Musical notation for the first arpeggio of the Eb major scale. The notes Eb, F, G, Ab, Bb, C, D, Eb are written on a single staff in 4/4 time, with a key signature of two flats. The notes are beamed together and repeated five times.

6. Put The Arpeggios Together

Play 5 times

Musical notation for putting the arpeggios together. It consists of a single staff of music in 4/4 time, with a key signature of two flats. The notes are written in a sequence that combines the bottom 4 notes (Eb, F, G, Ab) and the top 4 notes (Bb, C, D, Eb), repeated five times.

C

Learning the Major Scales - E Concert

1. Play all the notes

Musical notation for playing all the notes of the E major scale. It consists of four staves of music in treble clef, 4/4 time, with a key signature of three sharps (F#, C#, G#). The first staff shows the scale ascending and then descending. The second and third staves show the scale ascending and then descending in a more complex, multi-measure format. The fourth staff shows the scale ascending and then descending in a more complex, multi-measure format.

2. The Bottom 4 Notes

Play 5 times

Musical notation for the bottom 4 notes of the E major scale (E, F#, G#, A) in treble clef, 4/4 time, with a key signature of three sharps. The notation shows the notes ascending and then descending, with a repeat sign at the end.

3. The Top 4 Notes

Play 5 times

Musical notation for the top 4 notes of the E major scale (B, C#, D#, E) in treble clef, 4/4 time, with a key signature of three sharps. The notation shows the notes ascending and then descending, with a repeat sign at the end.

4. Put The Scale Together

Play 5 times

Musical notation for putting the scale together in treble clef, 4/4 time, with a key signature of three sharps. The notation shows the full scale ascending and then descending, with a repeat sign at the end.

5. The First Arpeggio

Play 5 times

Musical notation for the first arpeggio of the E major scale (E, F#, G#, A) in treble clef, 4/4 time, with a key signature of three sharps. The notation shows the notes ascending and then descending, with a repeat sign at the end.

6. Put The Arpeggios Together

Play 5 times

Musical notation for putting the arpeggios together in treble clef, 4/4 time, with a key signature of three sharps. The notation shows the full scale ascending and then descending, with a repeat sign at the end.

7. Ascending 3rds- The Bottom Half

Play 5 times



8. Ascending 3rds- The Top Half

Play 5 times



9. Put Together The Ascending 3rds

Play 5 times



10. Descending 3rds- The Top Half

Play 5 times



11. Descending 3rds- The Bottom Half

Play 5 times



12. Put Together The Descending 3rds

Play 5 times



13. The Complete Scale, Arpeggio, and Scale in 3rds



C

Learning the Major Scales - F Concert

1. Play all the notes

Musical notation for playing all the notes of the F major scale. It consists of four staves of music in 4/4 time, starting with a treble clef and a key signature of one flat (Bb). The first staff shows the scale in ascending order: F4, G4, A4, Bb4, C5, Bb4, A4, G4, F4. The second staff shows the scale in descending order: F4, G4, A4, Bb4, C5, Bb4, A4, G4, F4. The third and fourth staves show the scale in ascending and descending order, respectively, with a final whole note on the starting note (F4) to indicate the end of the scale.

2. The Bottom 4 Notes

Musical notation for the bottom 4 notes of the F major scale. It consists of a single staff of music in 4/4 time, starting with a treble clef and a key signature of one flat (Bb). The notes are F4, G4, A4, Bb4. The instruction "Play 5 times" is written above the staff. The piece ends with a double bar line and repeat dots.

3. The Top 4 Notes

Musical notation for the top 4 notes of the F major scale. It consists of a single staff of music in 4/4 time, starting with a treble clef and a key signature of one flat (Bb). The notes are C5, Bb4, A4, G4. The instruction "Play 5 times" is written above the staff. The piece ends with a double bar line and repeat dots.

4. Put The Scale Together

Musical notation for putting the scale together. It consists of a single staff of music in 4/4 time, starting with a treble clef and a key signature of one flat (Bb). The notes are F4, G4, A4, Bb4, C5, Bb4, A4, G4, F4. The instruction "Play 5 times" is written above the staff. The piece ends with a double bar line and repeat dots.

5. The First Arpeggio

Musical notation for the first arpeggio of the F major scale. It consists of a single staff of music in 4/4 time, starting with a treble clef and a key signature of one flat (Bb). The notes are F4, A4, C5, Bb4. The instruction "Play 5 times" is written above the staff. The piece ends with a double bar line and repeat dots.

6. Put The Arpeggios Together

Musical notation for putting the arpeggios together. It consists of a single staff of music in 4/4 time, starting with a treble clef and a key signature of one flat (Bb). The notes are F4, A4, C5, Bb4, F4. The instruction "Play 5 times" is written above the staff. The piece ends with a double bar line and repeat dots.

7. Ascending 3rds- The Bottom Half

Play 5 times



8. Ascending 3rds- The Top Half

Play 5 times



9. Put Together The Ascending 3rds

Play 5 times



10. Descending 3rds- The Top Half

Play 5 times



11. Descending 3rds- The Bottom Half

Play 5 times



12. Put Together The Descending 3rds

Play 5 times



13. The Complete Scale, Arpeggio, and Scale in 3rds



7. Ascending 3rds- The Bottom Half

Play 5 times

8. Ascending 3rds- The Top Half

Play 5 times

9. Put Together The Ascending 3rds

Play 5 times

10. Descending 3rds- The Top Half

Play 5 times

11. Descending 3rds- The Bottom Half

Play 5 times

12. Put Together The Descending 3rds

Play 5 times

13. The Complete Scale, Arpeggio, and Scale in 3rds

C

Learning the Major Scales - G Concert

1. Play all the notes

Musical notation for playing all the notes of the G major scale. It consists of four staves of music in G major (one sharp) and 4/4 time. The first staff shows the ascending scale: G4 (quarter), A4 (quarter), B4 (quarter), C5 (quarter), D5 (half). The second staff shows the descending scale: D5 (half), C5 (quarter), B4 (quarter), A4 (quarter), G4 (quarter). The third staff shows the ascending scale: G4 (quarter), A4 (quarter), B4 (quarter), C5 (quarter), D5 (half). The fourth staff shows the descending scale: D5 (half), C5 (quarter), B4 (quarter), A4 (quarter), G4 (quarter).

2. The Bottom 4 Notes

Play 5 times

Musical notation for the bottom 4 notes of the G major scale: G4 (quarter), A4 (quarter), B4 (quarter), C5 (quarter), D5 (half). The notation includes a repeat sign at the end.

3. The Top 4 Notes

Play 5 times

Musical notation for the top 4 notes of the G major scale: D5 (half), C5 (quarter), B4 (quarter), A4 (quarter), G4 (quarter). The notation includes a repeat sign at the end.

4. Put The Scale Together

Play 5 times

Musical notation for putting the scale together. It consists of a single staff of music in G major and 4/4 time. The notation shows the ascending scale: G4 (quarter), A4 (quarter), B4 (quarter), C5 (quarter), D5 (half). The notation includes a repeat sign at the end.

5. The First Arpeggio

Play 5 times

Musical notation for the first arpeggio of the G major scale: G4 (quarter), B4 (quarter), D5 (quarter), G4 (half). The notation includes a repeat sign at the end.

6. Put The Arpeggios Together

Play 5 times

Musical notation for putting the arpeggios together. It consists of a single staff of music in G major and 4/4 time. The notation shows the first arpeggio: G4 (quarter), B4 (quarter), D5 (quarter), G4 (half). The notation includes a repeat sign at the end.

7. Ascending 3rds- The Bottom Half



8. Ascending 3rds- The Top Half



9. Put Together The Ascending 3rds



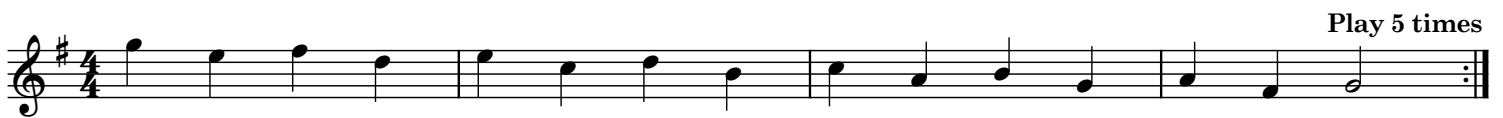
10. Descending 3rds- The Top Half



11. Descending 3rds- The Bottom Half



12. Put Together The Descending 3rds



13. The Complete Scale, Arpeggio, and Scale in 3rds



C

Learning the Major Scales - Ab Concert

1. Play all the notes

Musical notation for playing all the notes of the Ab major scale. The notation consists of four staves, each containing a sequence of notes in 4/4 time. The notes are: Ab, Bb, C, D, Eb, F, G, Ab (first staff); Bb, C, D, Eb, F, G, Ab, Bb (second staff); C, D, Eb, F, G, Ab, Bb, C (third staff); D, Eb, F, G, Ab, Bb, C, D (fourth staff).

2. The Bottom 4 Notes

Musical notation for the bottom 4 notes of the Ab major scale: Ab, Bb, C, D. The notation is in 4/4 time and includes the instruction "Play 5 times" above the staff.

3. The Top 4 Notes

Musical notation for the top 4 notes of the Ab major scale: Eb, F, G, Ab. The notation is in 4/4 time and includes the instruction "Play 5 times" above the staff.

4. Put The Scale Together

Musical notation for putting the scale together, showing the full Ab major scale: Ab, Bb, C, D, Eb, F, G, Ab. The notation is in 4/4 time and includes the instruction "Play 5 times" above the staff.

5. The First Arpeggio

Musical notation for the first arpeggio of the Ab major scale: Ab, Bb, C, D. The notation is in 4/4 time and includes the instruction "Play 5 times" above the staff.

6. Put The Arpeggios Together

Musical notation for putting the arpeggios together, showing the full Ab major scale: Ab, Bb, C, D, Eb, F, G, Ab. The notation is in 4/4 time and includes the instruction "Play 5 times" above the staff.

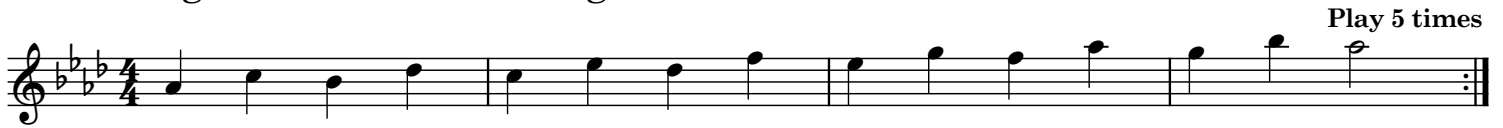
7. Ascending 3rds- The Bottom Half



8. Ascending 3rds- The Top Half



9. Put Together The Ascending 3rds



10. Descending 3rds- The Top Half



11. Descending 3rds- The Bottom Half



12. Put Together The Descending 3rds



13. The Complete Scale, Arpeggio, and Scale in 3rds



C

Learning the Major Scales - A Concert

1. Play all the notes

Musical notation for playing all the notes of the C major scale. It consists of four staves of music in treble clef, 4/4 time, with a key signature of one sharp (F#). The notes are: C4 (quarter), D4 (quarter), E4 (quarter), F#4 (quarter), G4 (quarter), A4 (quarter), B4 (quarter), C5 (quarter), B4 (quarter), A4 (quarter), G4 (quarter), F#4 (quarter), E4 (quarter), D4 (quarter), C4 (quarter), B3 (quarter), A3 (quarter), G3 (quarter), F#3 (quarter), E3 (quarter), D3 (quarter), C3 (quarter), B2 (quarter), A2 (quarter), G2 (quarter), F#2 (quarter), E2 (quarter), D2 (quarter), C2 (quarter).

2. The Bottom 4 Notes

Musical notation for the bottom 4 notes of the C major scale. It consists of one staff of music in treble clef, 4/4 time, with a key signature of one sharp (F#). The notes are: C4 (quarter), D4 (quarter), E4 (quarter), F#4 (quarter), G4 (quarter), A4 (quarter), B4 (quarter), C5 (quarter). The instruction "Play 5 times" is written above the staff.

3. The Top 4 Notes

Musical notation for the top 4 notes of the C major scale. It consists of one staff of music in treble clef, 4/4 time, with a key signature of one sharp (F#). The notes are: G4 (quarter), A4 (quarter), B4 (quarter), C5 (quarter), B4 (quarter), A4 (quarter), G4 (quarter), F#4 (quarter). The instruction "Play 5 times" is written above the staff.

4. Put The Scale Together

Musical notation for putting the scale together. It consists of one staff of music in treble clef, 4/4 time, with a key signature of one sharp (F#). The notes are: C4 (quarter), D4 (quarter), E4 (quarter), F#4 (quarter), G4 (quarter), A4 (quarter), B4 (quarter), C5 (quarter), B4 (quarter), A4 (quarter), G4 (quarter), F#4 (quarter), E4 (quarter), D4 (quarter), C4 (quarter), B3 (quarter), A3 (quarter), G3 (quarter), F#3 (quarter), E3 (quarter), D3 (quarter), C3 (quarter), B2 (quarter), A2 (quarter), G2 (quarter), F#2 (quarter), E2 (quarter), D2 (quarter), C2 (quarter). The instruction "Play 5 times" is written above the staff.

5. The First Arpeggio

Musical notation for the first arpeggio of the C major scale. It consists of one staff of music in treble clef, 4/4 time, with a key signature of one sharp (F#). The notes are: C4 (quarter), E4 (quarter), G4 (quarter), B4 (quarter), C5 (quarter), B4 (quarter), A4 (quarter), G4 (quarter), F#4 (quarter), E4 (quarter), C4 (quarter). The instruction "Play 5 times" is written above the staff.

6. Put The Arpeggios Together

Musical notation for putting the arpeggios together. It consists of one staff of music in treble clef, 4/4 time, with a key signature of one sharp (F#). The notes are: C4 (quarter), E4 (quarter), G4 (quarter), B4 (quarter), C5 (quarter), B4 (quarter), A4 (quarter), G4 (quarter), F#4 (quarter), E4 (quarter), C4 (quarter), B3 (quarter), A3 (quarter), G3 (quarter), F#3 (quarter), E3 (quarter), C3 (quarter). The instruction "Play 5 times" is written above the staff.

7. Ascending 3rds- The Bottom Half

Play 5 times

8. Ascending 3rds- The Top Half

Play 5 times

9. Put Together The Ascending 3rds

Play 5 times

10. Descending 3rds- The Top Half

Play 5 times

11. Descending 3rds- The Bottom Half

Play 5 times

12. Put Together The Descending 3rds

Play 5 times

13. The Complete Scale, Arpeggio, and Scale in 3rds