

Bass Clef

## Learning the Major Scales - Bb Concert

1. Play all the notes

Four staves of musical notation in bass clef, 4/4 time, showing the Bb major scale. The first staff contains the ascending and descending scale notes. The second and third staves show the scale in pairs of two notes, and the fourth staff shows the scale in groups of four notes.

2. The Bottom 4 Notes

Play 5 times

One staff of musical notation in bass clef, 4/4 time, showing the bottom four notes of the Bb major scale: Bb, C, D, and Eb. The notation includes a repeat sign and a double bar line.

3. The Top 4 Notes

Play 5 times

One staff of musical notation in bass clef, 4/4 time, showing the top four notes of the Bb major scale: F, G, Ab, and Bb. The notation includes a repeat sign and a double bar line.

4. Put The Scale Together

Play 5 times

One staff of musical notation in bass clef, 4/4 time, showing the full Bb major scale. The notation includes a repeat sign and a double bar line.

5. The First Arpeggio

Play 5 times

One staff of musical notation in bass clef, 4/4 time, showing the first arpeggio of the Bb major scale: Bb, C, D, Eb. The notation includes a repeat sign and a double bar line.

6. Put The Arpeggios Together

Play 5 times

One staff of musical notation in bass clef, 4/4 time, showing the first arpeggio of the Bb major scale followed by a whole note Bb. The notation includes a repeat sign and a double bar line.

### 7. Ascending 3rds- The Bottom Half

Play 5 times



### 8. Ascending 3rds- The Top Half

Play 5 times



### 9. Put Together The Ascending 3rds

Play 5 times



### 10. Descending 3rds- The Top Half

Play 5 times



### 11. Descending 3rds- The Bottom Half

Play 5 times



### 12. Put Together The Descending 3rds

Play 5 times



### 13. The Complete Scale, Arpeggio, and Scale in 3rds



Bass Clef

## Learning the Major Scales - B Concert

1. Play all the notes

Musical notation for playing all the notes of the B major scale in bass clef. The notation consists of four staves, each containing a sequence of notes in 4/4 time. The first staff shows the ascending scale: B2, C3, D3, E3, F#3, G#3, A3, B3. The second staff shows the descending scale: B3, A3, G#3, F#3, E3, D3, C3, B2. The third and fourth staves show the scale starting from the second degree (C3) and ascending, and then descending, respectively.

2. The Bottom 4 Notes

Play 5 times

Musical notation for the bottom 4 notes of the B major scale: B2, C3, D3, E3. The notation is in bass clef, 4/4 time, and includes a repeat sign at the end.

3. The Top 4 Notes

Play 5 times

Musical notation for the top 4 notes of the B major scale: F#3, G#3, A3, B3. The notation is in bass clef, 4/4 time, and includes a repeat sign at the end.

4. Put The Scale Together

Play 5 times

Musical notation for the full B major scale: B2, C3, D3, E3, F#3, G#3, A3, B3. The notation is in bass clef, 4/4 time, and includes a repeat sign at the end.

5. The First Arpeggio

Play 5 times

Musical notation for the first arpeggio of the B major scale: B2, C3, D3, E3. The notation is in bass clef, 4/4 time, and includes a repeat sign at the end.

6. Put The Arpeggios Together

Play 5 times

Musical notation for the first arpeggio of the B major scale: B2, C3, D3, E3. The notation is in bass clef, 4/4 time, and includes a repeat sign at the end.

### 7. Ascending 3rds- The Bottom Half

Play 5 times



### 8. Ascending 3rds- The Top Half

Play 5 times



### 9. Put Together The Ascending 3rds

Play 5 times



### 10. Descending 3rds- The Top Half

Play 5 times



### 11. Descending 3rds- The Bottom Half

Play 5 times



### 12. Put Together The Descending 3rds

Play 5 times



### 13. The Complete Scale, Arpeggio, and Scale in 3rds



Bass Clef

## Learning the Major Scales - C Concert

1. Play all the notes

Four staves of musical notation in bass clef, 4/4 time. The first staff shows the C major scale in a single line. The second and third staves show the scale in two voices (treble and bass clef). The fourth staff shows the scale in a single line again.

2. The Bottom 4 Notes

Play 5 times

One staff of musical notation in bass clef, 4/4 time, showing the bottom four notes of the C major scale (C, D, E, F) in a single line.

3. The Top 4 Notes

Play 5 times

One staff of musical notation in bass clef, 4/4 time, showing the top four notes of the C major scale (G, A, B, C) in a single line.

4. Put The Scale Together

Play 5 times

One staff of musical notation in bass clef, 4/4 time, showing the full C major scale in a single line.

5. The First Arpeggio

Play 5 times

One staff of musical notation in bass clef, 4/4 time, showing the first arpeggio of the C major scale (C, E, G) in a single line.

6. Put The Arpeggios Together

Play 5 times

One staff of musical notation in bass clef, 4/4 time, showing the first two arpeggios of the C major scale (C, E, G and F, A, C) in a single line.

### 7. Ascending 3rds- The Bottom Half

Play 5 times



### 8. Ascending 3rds- The Top Half

Play 5 times



### 9. Put Together The Ascending 3rds

Play 5 times



### 10. Descending 3rds- The Top Half

Play 5 times



### 11. Descending 3rds- The Bottom Half

Play 5 times



### 12. Put Together The Descending 3rds

Play 5 times



### 13. The Complete Scale, Arpeggio, and Scale in 3rds



Bass Clef

## Learning the Major Scales - Db Concert

1. Play all the notes

Musical notation for playing all the notes of the Db major scale in bass clef, 4/4 time. It consists of four staves. The first staff shows the ascending scale: G2, A2, Bb2, C3, D3, E3, F3, G3. The second staff shows the descending scale: G3, F3, E3, D3, C3, Bb2, A2, G2. The third and fourth staves show the scale played in pairs of ascending and descending lines.

2. The Bottom 4 Notes

Play 5 times

Musical notation for the bottom 4 notes of the Db major scale in bass clef, 4/4 time. The notes are G2, A2, Bb2, C3. The notation includes a repeat sign at the end.

3. The Top 4 Notes

Play 5 times

Musical notation for the top 4 notes of the Db major scale in bass clef, 4/4 time. The notes are D3, E3, F3, G3. The notation includes a repeat sign at the end.

4. Put The Scale Together

Play 5 times

Musical notation for putting the scale together in bass clef, 4/4 time. It shows the ascending and descending scales. The notation includes a repeat sign at the end.

5. The First Arpeggio

Play 5 times

Musical notation for the first arpeggio of the Db major scale in bass clef, 4/4 time. The notes are G2, A2, Bb2, C3. The notation includes a repeat sign at the end.

6. Put The Arpeggios Together

Play 5 times

Musical notation for putting the arpeggios together in bass clef, 4/4 time. It shows the ascending and descending arpeggios. The notation includes a repeat sign at the end.

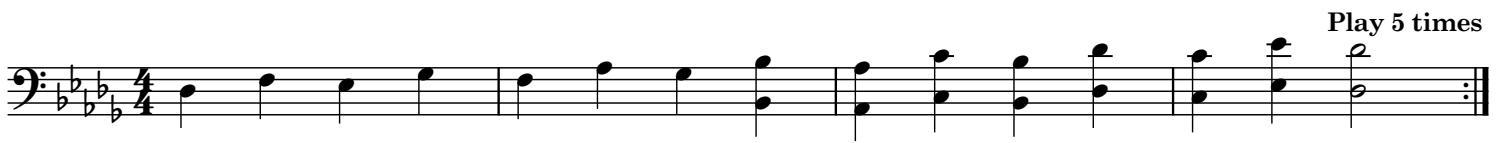
## 7. Ascending 3rds- The Bottom Half



## 8. Ascending 3rds- The Top Half



## 9. Put Together The Ascending 3rds



## 10. Descending 3rds- The Top Half



## 11. Descending 3rds- The Bottom Half



## 12. Put Together The Descending 3rds



## 13. The Complete Scale, Arpeggio, and Scale in 3rds

Musical notation for exercise 13, consisting of three staves. Each staff shows a bass clef, a key signature of three flats, and a 4/4 time signature. The first staff contains the complete scale: B-flat, C, D, E-flat, F, G, A-flat, B-flat. The second staff contains the arpeggio: B-flat, C, D, E-flat, F, G, A-flat, B-flat. The third staff contains the scale in 3rds: B-flat, C, D, E-flat, F, G, A-flat, B-flat.



Bass Clef

# Learning the Major Scales - D Concert

1. Play all the notes

Four staves of musical notation in bass clef, 4/4 time, showing the D major scale (D-E-F#-G-A-B-C#-D) in both ascending and descending directions. The first staff shows the ascending scale with quarter notes. The second staff shows the descending scale with quarter notes. The third and fourth staves show the ascending and descending scales with eighth notes.

2. The Bottom 4 Notes

Play 5 times

Two staves of musical notation in bass clef, 4/4 time, showing the bottom four notes of the D major scale (D-E-F#-G) in ascending and descending directions. The notation includes a repeat sign at the end.

3. The Top 4 Notes

Play 5 times

Two staves of musical notation in bass clef, 4/4 time, showing the top four notes of the D major scale (A-B-C#-D) in ascending and descending directions. The notation includes a repeat sign at the end.

4. Put The Scale Together

Play 5 times

One staff of musical notation in bass clef, 4/4 time, showing the full D major scale (D-E-F#-G-A-B-C#-D) in ascending and descending directions. The notation includes a repeat sign at the end.

5. The First Arpeggio

Play 5 times

Two staves of musical notation in bass clef, 4/4 time, showing the first arpeggio of the D major scale (D-E-F#-G) in ascending and descending directions. The notation includes a repeat sign at the end.

6. Put The Arpeggios Together

Play 5 times

Two staves of musical notation in bass clef, 4/4 time, showing the first arpeggio of the D major scale (D-E-F#-G) in ascending and descending directions. The notation includes a repeat sign at the end.

### 7. Ascending 3rds- The Bottom Half

Play 5 times



### 8. Ascending 3rds- The Top Half

Play 5 times



### 9. Put Together The Ascending 3rds

Play 5 times



### 10. Descending 3rds- The Top Half

Play 5 times



### 11. Descending 3rds- The Bottom Half

Play 5 times



### 12. Put Together The Descending 3rds

Play 5 times



### 13. The Complete Scale, Arpeggio, and Scale in 3rds



Bass Clef

## Learning the Major Scales - Eb Concert

1. Play all the notes

Four staves of musical notation in bass clef, Eb major, 4/4 time. The first staff shows the scale ascending and descending. The second staff shows the scale ascending and descending in pairs of eighth notes. The third staff shows the scale ascending and descending in groups of four sixteenth notes. The fourth staff shows the scale ascending and descending in groups of four sixteenth notes, with a final whole note.

2. The Bottom 4 Notes

Play 5 times

One staff of musical notation in bass clef, Eb major, 4/4 time. The notes are Eb, F, G, Ab, followed by a repeat sign.

3. The Top 4 Notes

Play 5 times

One staff of musical notation in bass clef, Eb major, 4/4 time. The notes are G, Ab, Bb, C, followed by a repeat sign.

4. Put The Scale Together

Play 5 times

One staff of musical notation in bass clef, Eb major, 4/4 time. The notes are Eb, F, G, Ab, Bb, C, D, Eb, followed by a repeat sign.

5. The First Arpeggio

Play 5 times

One staff of musical notation in bass clef, Eb major, 4/4 time. The notes are Eb, G, Bb, C, followed by a repeat sign.

6. Put The Arpeggios Together

Play 5 times

One staff of musical notation in bass clef, Eb major, 4/4 time. The notes are Eb, G, Bb, C, D, Eb, followed by a repeat sign.

### 7. Ascending 3rds- The Bottom Half

Play 5 times



### 8. Ascending 3rds- The Top Half

Play 5 times



### 9. Put Together The Ascending 3rds

Play 5 times



### 10. Descending 3rds- The Top Half

Play 5 times



### 11. Descending 3rds- The Bottom Half

Play 5 times



### 12. Put Together The Descending 3rds

Play 5 times



### 13. The Complete Scale, Arpeggio, and Scale in 3rds



Bass Clef

## Learning the Major Scales - E Concert

1. Play all the notes

Four staves of musical notation in bass clef, 4/4 time, with a key signature of three sharps (F#, C#, G#). The first staff shows the scale in a single line. The second and third staves show the scale in a two-line format, with the right hand playing the upper notes and the left hand playing the lower notes. The fourth staff shows the scale in a single line again.

2. The Bottom 4 Notes

One staff of musical notation in bass clef, 4/4 time, with a key signature of three sharps. The notes are E2, F#2, C#3, and G#3. The instruction "Play 5 times" is written above the staff.

3. The Top 4 Notes

One staff of musical notation in bass clef, 4/4 time, with a key signature of three sharps. The notes are A3, B3, C#4, and D4. The instruction "Play 5 times" is written above the staff.

4. Put The Scale Together

One staff of musical notation in bass clef, 4/4 time, with a key signature of three sharps. The notes are E2, F#2, C#3, G#3, A3, B3, C#4, and D4. The instruction "Play 5 times" is written above the staff.

5. The First Arpeggio

One staff of musical notation in bass clef, 4/4 time, with a key signature of three sharps. The notes are E2, F#2, C#3, and G#3. The instruction "Play 5 times" is written above the staff.

6. Put The Arpeggios Together

One staff of musical notation in bass clef, 4/4 time, with a key signature of three sharps. The notes are E2, F#2, C#3, G#3, A3, and B3. The instruction "Play 5 times" is written above the staff.

### 7. Ascending 3rds- The Bottom Half

Play 5 times



### 8. Ascending 3rds- The Top Half

Play 5 times



### 9. Put Together The Ascending 3rds

Play 5 times



### 10. Descending 3rds- The Top Half

Play 5 times



### 11. Descending 3rds- The Bottom Half

Play 5 times



### 12. Put Together The Descending 3rds

Play 5 times



### 13. The Complete Scale, Arpeggio, and Scale in 3rds



Bass Clef

## Learning the Major Scales - F Concert

1. Play all the notes

Four staves of musical notation in bass clef, 4/4 time, showing the F major scale (F, C, G, D, A, E, Bb, F) in both ascending and descending directions. The first staff shows the ascending scale with quarter notes. The second staff shows the descending scale with quarter notes. The third staff shows the ascending scale with eighth notes. The fourth staff shows the descending scale with eighth notes.

2. The Bottom 4 Notes

One staff of musical notation in bass clef, 4/4 time, showing the bottom four notes of the F major scale (F, C, G, D) in ascending and descending directions. The instruction "Play 5 times" is written above the staff.

3. The Top 4 Notes

One staff of musical notation in bass clef, 4/4 time, showing the top four notes of the F major scale (A, E, Bb, F) in ascending and descending directions. The instruction "Play 5 times" is written above the staff.

4. Put The Scale Together

One staff of musical notation in bass clef, 4/4 time, showing the full F major scale (F, C, G, D, A, E, Bb, F) in ascending and descending directions. The instruction "Play 5 times" is written above the staff.

5. The First Arpeggio

One staff of musical notation in bass clef, 4/4 time, showing the first arpeggio of the F major scale (F, C, G, D) in ascending and descending directions. The instruction "Play 5 times" is written above the staff.

6. Put The Arpeggios Together

One staff of musical notation in bass clef, 4/4 time, showing the first and second arpeggios of the F major scale (F, C, G, D and A, E, Bb, F) in ascending and descending directions. The instruction "Play 5 times" is written above the staff.

### 7. Ascending 3rds- The Bottom Half

Play 5 times



### 8. Ascending 3rds- The Top Half

Play 5 times



### 9. Put Together The Ascending 3rds

Play 5 times



### 10. Descending 3rds- The Top Half

Play 5 times



### 11. Descending 3rds- The Bottom Half

Play 5 times



### 12. Put Together The Descending 3rds

Play 5 times



### 13. The Complete Scale, Arpeggio, and Scale in 3rds





Bass Clef

## Learning the Major Scales - Gb Concert

1. Play all the notes

Four staves of musical notation in bass clef, 4/4 time, showing the Gb major scale. The first staff shows the ascending scale: Gb, Ab, Bb, Cb, Db, Eb, Fb, Gb. The second staff shows the descending scale: Gb, Fb, Eb, Db, Cb, Bb, Ab, Gb. The third staff shows the ascending scale with a repeat sign at the end. The fourth staff shows the descending scale with a repeat sign at the end.

2. The Bottom 4 Notes

Play 5 times

One staff of musical notation in bass clef, 4/4 time, showing the bottom 4 notes of the Gb major scale: Gb, Ab, Bb, Cb. The staff ends with a repeat sign.

3. The Top 4 Notes

Play 5 times

One staff of musical notation in bass clef, 4/4 time, showing the top 4 notes of the Gb major scale: Db, Eb, Fb, Gb. The staff ends with a repeat sign.

4. Put The Scale Together

Play 5 times

One staff of musical notation in bass clef, 4/4 time, showing the full Gb major scale: Gb, Ab, Bb, Cb, Db, Eb, Fb, Gb. The staff ends with a repeat sign.

5. The First Arpeggio

Play 5 times

One staff of musical notation in bass clef, 4/4 time, showing the first arpeggio of the Gb major scale: Gb, Ab, Bb, Cb. The staff ends with a repeat sign.

6. Put The Arpeggios Together

Play 5 times

One staff of musical notation in bass clef, 4/4 time, showing the first arpeggio of the Gb major scale: Gb, Ab, Bb, Cb. The staff ends with a repeat sign.

### 7. Ascending 3rds- The Bottom Half

Play 5 times



### 8. Ascending 3rds- The Top Half

Play 5 times



### 9. Put Together The Ascending 3rds

Play 5 times



### 10. Descending 3rds- The Top Half

Play 5 times



### 11. Descending 3rds- The Bottom Half

Play 5 times



### 12. Put Together The Descending 3rds

Play 5 times



### 13. The Complete Scale, Arpeggio, and Scale in 3rds



Bass Clef

## Learning the Major Scales - G Concert

1. Play all the notes

Four staves of musical notation in bass clef, 4/4 time, showing the G major scale. The first staff shows the ascending scale: G2 (quarter), A2 (quarter), B2 (quarter), C3 (quarter), D3 (half). The second staff shows the descending scale: D3 (half), C3 (quarter), B2 (quarter), A2 (quarter), G2 (quarter). The third staff shows the ascending scale: G2 (quarter), A2 (quarter), B2 (quarter), C3 (quarter), D3 (half). The fourth staff shows the descending scale: D3 (half), C3 (quarter), B2 (quarter), A2 (quarter), G2 (quarter).

2. The Bottom 4 Notes

Play 5 times

One staff of musical notation in bass clef, 4/4 time, showing the bottom 4 notes of the G major scale: G2 (quarter), A2 (quarter), B2 (quarter), C3 (quarter). The staff ends with a double bar line and repeat dots.

3. The Top 4 Notes

Play 5 times

One staff of musical notation in bass clef, 4/4 time, showing the top 4 notes of the G major scale: D3 (quarter), C3 (quarter), B2 (quarter), A2 (quarter). The staff ends with a double bar line and repeat dots.

4. Put The Scale Together

Play 5 times

One staff of musical notation in bass clef, 4/4 time, showing the full G major scale: G2 (quarter), A2 (quarter), B2 (quarter), C3 (quarter), D3 (half), C3 (quarter), B2 (quarter), A2 (quarter), G2 (quarter). The staff ends with a double bar line and repeat dots.

5. The First Arpeggio

Play 5 times

One staff of musical notation in bass clef, 4/4 time, showing the first arpeggio of the G major scale: G2 (quarter), B2 (quarter), D3 (quarter), A2 (quarter). The staff ends with a double bar line and repeat dots.

6. Put The Arpeggios Together

Play 5 times

One staff of musical notation in bass clef, 4/4 time, showing the first arpeggio followed by the second arpeggio: G2 (quarter), B2 (quarter), D3 (quarter), A2 (quarter), C3 (quarter), B2 (quarter), A2 (quarter), G2 (quarter). The staff ends with a double bar line and repeat dots.

### 7. Ascending 3rds- The Bottom Half

Play 5 times



### 8. Ascending 3rds- The Top Half

Play 5 times



### 9. Put Together The Ascending 3rds

Play 5 times



### 10. Descending 3rds- The Top Half

Play 5 times



### 11. Descending 3rds- The Bottom Half

Play 5 times



### 12. Put Together The Descending 3rds

Play 5 times



### 13. The Complete Scale, Arpeggio, and Scale in 3rds



Bass Clef

## Learning the Major Scales - Ab Concert

1. Play all the notes

Musical notation for playing all the notes of the Ab major scale in bass clef, 4/4 time. It consists of four staves. The first staff shows the ascending and descending scale lines. The second and third staves show the scale in a two-staff format with chords. The fourth staff shows the scale in a single-staff format with chords.

2. The Bottom 4 Notes

Play 5 times

Musical notation for the bottom 4 notes of the Ab major scale in bass clef, 4/4 time. The notes are Ab, Bb, C, and D. The notation includes a repeat sign and a double bar line.

3. The Top 4 Notes

Play 5 times

Musical notation for the top 4 notes of the Ab major scale in bass clef, 4/4 time. The notes are E, F, G, and Ab. The notation includes a repeat sign and a double bar line.

4. Put The Scale Together

Play 5 times

Musical notation for putting the scale together in bass clef, 4/4 time. It shows the ascending and descending scale lines with a repeat sign and a double bar line.

5. The First Arpeggio

Play 5 times

Musical notation for the first arpeggio of the Ab major scale in bass clef, 4/4 time. The notes are Ab, Bb, C, and D. The notation includes a repeat sign and a double bar line.

6. Put The Arpeggios Together

Play 5 times

Musical notation for putting the arpeggios together in bass clef, 4/4 time. It shows the ascending and descending arpeggios with a repeat sign and a double bar line.

### 7. Ascending 3rds- The Bottom Half

Play 5 times



### 8. Ascending 3rds- The Top Half

Play 5 times



### 9. Put Together The Ascending 3rds

Play 5 times



### 10. Descending 3rds- The Top Half

Play 5 times



### 11. Descending 3rds- The Bottom Half

Play 5 times



### 12. Put Together The Descending 3rds

Play 5 times



### 13. The Complete Scale, Arpeggio, and Scale in 3rds



Bass Clef

# Learning the Major Scales - A Concert

1. Play all the notes

Four staves of music in bass clef, 4/4 time, key of A major (two sharps). The first staff shows the scale in eighth notes. The second and third staves show the scale in chords (dyads and triads). The fourth staff shows the scale in quarter notes.

2. The Bottom 4 Notes

Play 5 times

One staff of music in bass clef, 4/4 time, key of A major. It contains the first four notes of the scale: A2, B2, C3, D3.

3. The Top 4 Notes

Play 5 times

One staff of music in bass clef, 4/4 time, key of A major. It contains the last four notes of the scale: E3, F#3, G3, A3.

4. Put The Scale Together

Play 5 times

One staff of music in bass clef, 4/4 time, key of A major. It contains the full A major scale from A2 to A3.

5. The First Arpeggio

Play 5 times

One staff of music in bass clef, 4/4 time, key of A major. It contains the first four notes of the scale in an arpeggiated pattern: A2, B2, C3, D3.

6. Put The Arpeggios Together

Play 5 times

One staff of music in bass clef, 4/4 time, key of A major. It contains the first four notes of the scale in an arpeggiated pattern, followed by the last four notes in an arpeggiated pattern: A2, B2, C3, D3, E3, F#3, G3, A3.

### 7. Ascending 3rds- The Bottom Half

Play 5 times



### 8. Ascending 3rds- The Top Half

Play 5 times



### 9. Put Together The Ascending 3rds

Play 5 times



### 10. Descending 3rds- The Top Half

Play 5 times



### 11. Descending 3rds- The Bottom Half

Play 5 times



### 12. Put Together The Descending 3rds

Play 5 times



### 13. The Complete Scale, Arpeggio, and Scale in 3rds

